

CENTRAL MAPPING AUTHORITY

Department of Lands

Trigonometrical Survey of N.S.W.

RECONNAISSANCE and MAINTENANCE REPORT

This Trig. Station has been:-

Note: Cross out word or words which do not apply

1. Completely cleared to permit 360° vision to surrounding Trig.
2. Cleared by lanes bearing $255^{\circ}-266^{\circ}$, $294^{\circ}-312^{\circ}$, $355^{\circ}-1^{\circ}$ from Trig. Mast
3. Trig. Mast & Vanes have been painted white & black respectively.
4. The Trig. was unpiled/not unpiled, dimensions now being: Trig. Station
- Description of mark S/S PILLAR PLATE should be explicit, e.g. Steel plug, Brass plug, Bolt, G.I. Pipe
- Height of mark 1.373 m ^{above} rock/concrete below G.L.
- Height of Top Vanes to Top Mark 1.415 m. Diameter of Vanes (vertical) 0.751 m.
- Height of Cairn 1.495 m. Diameter of Cairn 0.664 m.
- Length of Mast 1.495 m. (approximate if not unpiled)
5. A Brass Plug set in conc/rock has been placed 2.308 m. bearing 260 ^{from Trig. Mast}
6. A Copper Nail set in conc/rock has been placed 2.479 m. bearing 357 ^{from Trig. Mast}
7. A set in conc/soil has been placed 0.664 m. bearing 0.664 ^{from Trig. Mast}
8. A set in conc/rock has been placed 0.664 m. bearing 0.664 ^{from Trig. Mast}
9. Connection Brass Plug to Ev. Nail : 3.581 m. bearing 35 ^{from Trig. Mast}
10. Connection to to to m. bearing 0.664 ^{from Trig. Mast}
11. Connection to to to m. bearing 0.664 ^{from Trig. Mast}
12. Connection to to to m. bearing 0.664 ^{from Trig. Mast}
13. Diff. Ht. Brass Plug is 1.468 m. ^{above} below PILLAR PLATE
14. Diff. Ht. Copper Nail is 1.474 m. ^{above} below PILLAR PLATE
15. Diff. Ht. is is is m. ^{above} below below
16. Diff. Ht. is is is m. ^{above} below below

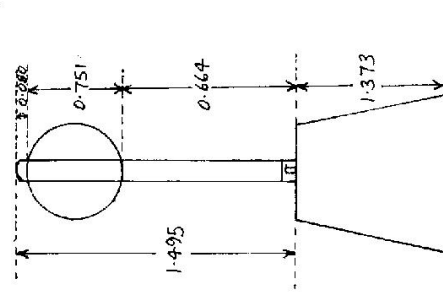
Prepared by: Bob LanderChecked: 11/1/76Noted on U.T.M. Card 11/1/76

Noted on U.T.M. Card

7-4-88

STATION MORAN G.S. (Pillar) TS 5552Co: COOK Ph: MEEANMap Sheet: SF ALBANS No: 9031Inspected by: W. M' GILLIVRAY Date: 15-4-76Authority CENTRAL MAPPING Field Book: 1391

Beacon Diagram Not to Scale



Date

Record of Station

Date 11/1/76 Conc Obs Pillar Selected

Checked

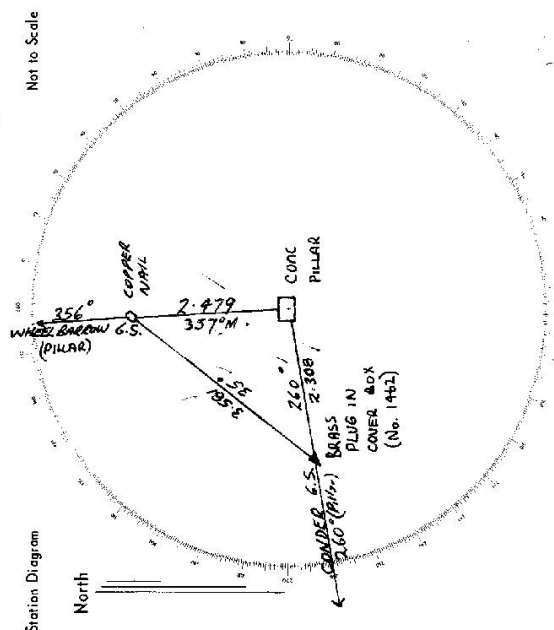
Current Occupant...

Address .

Owners Name.....

Address.....

Access



List of Observed Directions:—

Standpoint: PILLAR		Standpoint: BRASS		PLUG	
Station	Direction	Station	Direction	Station	Direction
CUNDR G.S. (Pillar)	359. 87. 60.	CUNDR G.S. (Pillar)	359. 59. 60.		
WHEELBARROW G.S. (Pillar)	96. 41. 55.	WHEELBARROW G.S. (Pillar)	96. 44. 00.		
COPPER NAIL	96. 42. 05.	COPPER NAIL	136. 31. 00.		
BRASS PLUG	357. 56. 15.	Centre Obs. Pillar-	179. 57. 35.		

CENTRAL MAPPING AUTHORITY

Department of Lands

Trigonometrical Survey of N.S.W.

RECONNAISSANCE and MAINTENANCE REPORT

This Trig. Station has been:-

Note: Cross out word or words which do not apply

1. Completely cleared to permit 360° vision to surrounding Trigs.
2. Cleared by lances bearing from Trig. Mast
3. Trig. Mast & Vanes have been painted white & black respectively.
4. The Trig. was unspiled/not unspiled, dimensions now being:

Description of mark: COMPLETE OBSERVATION PILLAR should be explicit, e.g. Steel plug, Brass plug, Bolt, G.I. Pipe

Height of mark m above rock/concrete m above G.L.
Height of Top Vanes to Pillar Plate 1.57 m. Diameter of Vanes (vertical) 0.75 m.
Height of Cairn m. Diameter of m.

Length of Mast m. (approximate if not unspiled)

5. A COPPER NAIL set in conc/rock has been placed 2.480 m. bearing 359° M from Obsn. Pillar
6. A PM 1462 set in conc/soil has been placed 2.307 m. bearing 262° M from Obsn. Pillar
7. A set in conc/soil has been placed m. bearing M from Trig. Mast
8. A set in conc/rock has been placed m. bearing M from Trig. Mast

9. Connection PM 1462 to COPPER NAIL : 3.582 m. bearing 399° M

10. Connection to m. bearing M

11. Connection to m. bearing M

12. Connection to m. bearing M

13. Diff. Ht. is m. above below

14. Diff. Ht. PILLAR PLATE is 1.466 m. above below PM 1462 BRASS THE BULL IN CONC.

15. Diff. Ht. PILLAR PLATE is 1.473 m. above below COPPER NAIL IN CONC.

16. Diff. Ht. is m. above below

Prepared by: P. CHEN

Checked: A. ... Noted on U.T.M. Card

STATION MORAN

Co: COOK

Map Sheet: ST. ALBANS

Inspected by: P. CARR

Authority: C.M.A.

Beacon Diagram

TS 5552

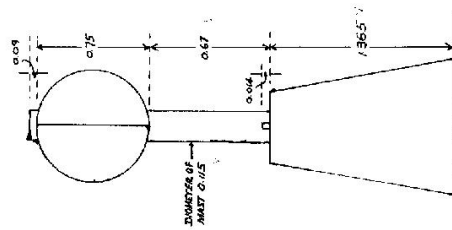
Ph: MEEHAN

No: 9031-S

Date: 30-5-76

Field Book: 1494

Not to Scale



Record of Station

Date

Checked

Owners Name:-

Address.

Access 36-5-1976

(M) MILEAGE

PARTICULARS

Travel North on Putty Road from Windsor
Witherforce : Intersection of Putty Road & Sackville Road.

058 · Howas Creek.

Mitchell obs. Pinar on left in Orchard.

10.6 Across Bridge

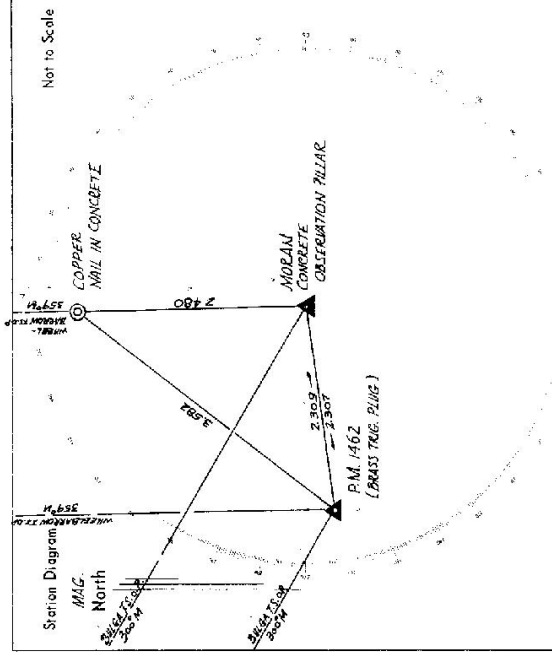
12.9 Blaxland Ridge Road on left (from Kuarojong)

15.3. Twig can be seen on left side of Road.

15.6 U^o turn left onto track

15.65 Gate

15.7 Trig Station



List of Observed Directions:--

Standpoint: CONC. OAS. PILLAR		Standpoint: P.M. 14-52 (BOAST TONG PULIG)	
Station	Direction	Station	Direction
BULEA T.S. OP	35° 55' 60"	BULEA T.S. OP	35° 55' 60"
WHEE-BARDON T.S. DP	58 57 09	WHEE-BARDON T.S. DP	58 58 04
P.M. 140.2 (BOAST TONG PULIG)	322 13	COPPER MALL IN CONC.	98 43
COPPER MALL IN CONC.	58 57 59	PILLAR SPINGOT	141 10

Department of Lands

Full top Survey of N.S.W.

RECONNAISSANCE and MAINTENANCE REPORT

This Trig. Station has been:-

Note: Cross out word or words which do not apply

1. Completely cleared to permit 360° vision to surrounding Trig.
2. Cleared by Vane bearing $294^\circ - 315^\circ W$, $357^\circ - 4^\circ M$
3. Trig. Mast & Vane have been painted white & black respectively.
4. The Trig. was unpiled/not unpiled, dimensions now being:

Description of mark Steel Plate on Conc. Pillar should be explicit, e.g. Steel plug, Brass plug, Bolt, Concrete Pillar

Height of mark..... m above rock/concrete 1.45 m above G.L.

Height of Top Vane to Top Mark/Top pillar plate..... m Diameter of Vane (vertical)..... m.

Height of Cairn..... m. Diameter of Cairn..... m.

Length of Mast 1.51 m. (approximate if not unpiled)

5. A Brass Plug set in conc/rock has been placed/d 2.305 m. bearing 261 °W from Trig. Mast/pillar
6. A Spile set in conc/soil has been placed/d 2.484 m. bearing 1 °W from Trig. Mast/pillar
7. A..... set in conc/soil has been placed/d..... m. bearing..... °W from Trig. Mast/pillar
8. A..... set in conc/rock has been placed/d..... m. bearing..... °W from Trig. Mast/pillar
9. Connection..... to..... m. bearing..... °W
10. Connection..... to..... m. bearing..... °W
11. Connection..... to..... m. bearing..... °W
12. Connection..... to..... m. bearing..... °W

13. Diff. Ht. Brass Plug is 1.466 m. above Pillar Plate14. Diff. Ht. is..... m. above below15. Diff. Ht. is..... m. above below16. Diff. Ht. is..... m. above belowPrepared by: G. EdwardsChecked: R. Dryza

TS 5552

STATION MORAN (P)Co: COOKPh: MEEHAN

Map Sheet:

Inspected by: G. Edwards

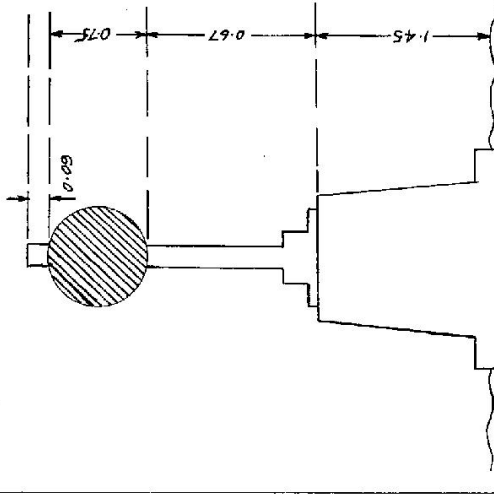
Dept. of Main Roads

No:

Date: 30-3-78

Beacon Diagram

Not to Scale



Record of Station

Date

